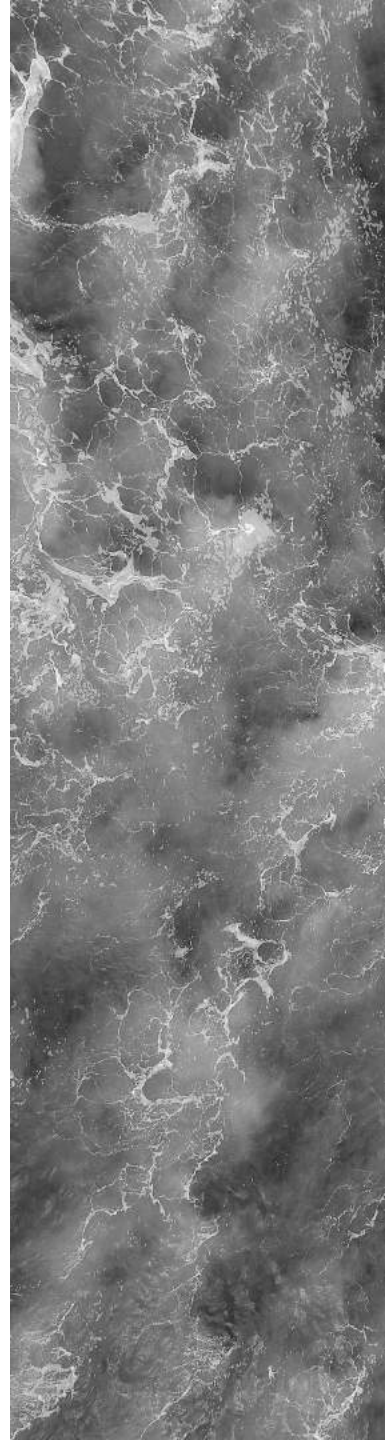




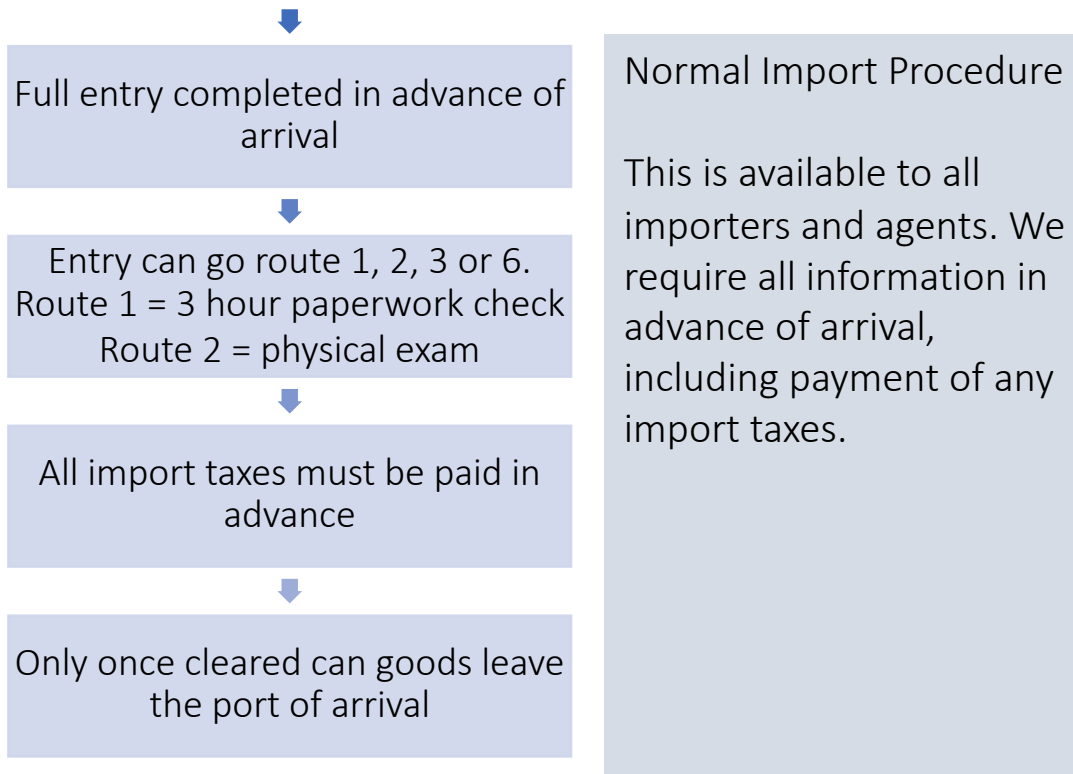
## 2022 IMPORT GUIDANCE

A guide and  
recommendations to  
upcoming changes in  
the UK

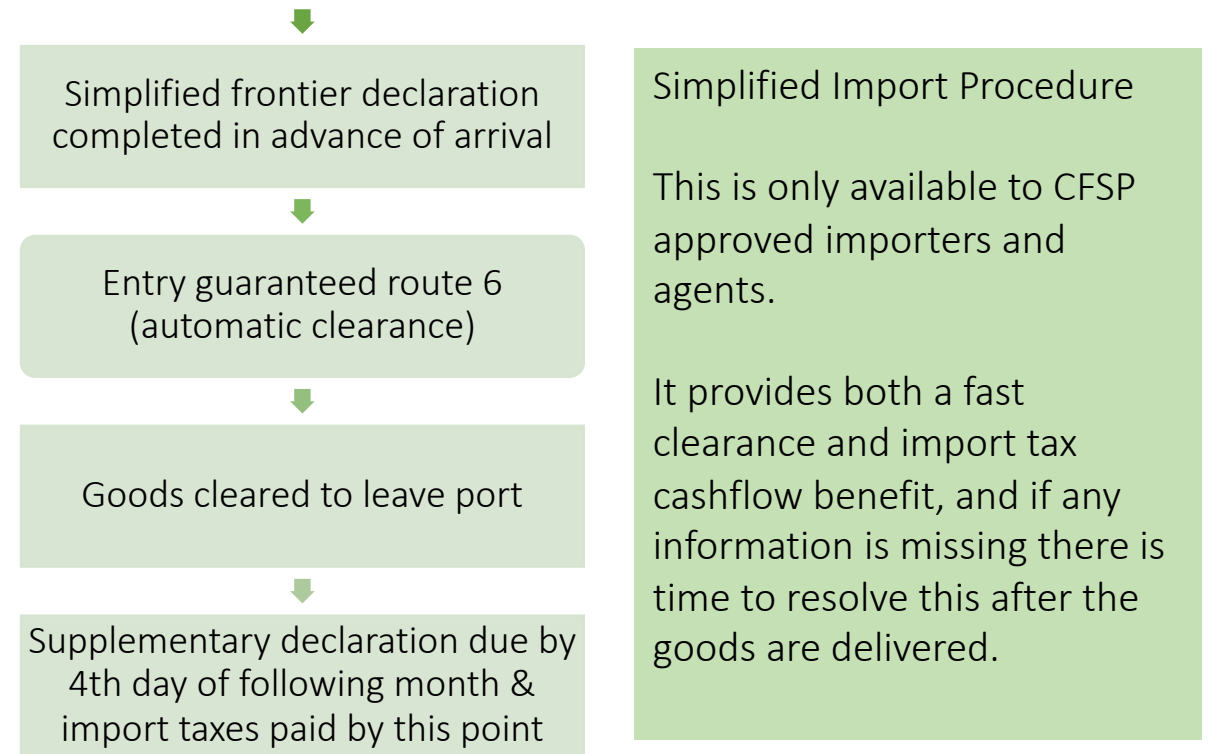


# IMPORT CLEARANCE OPTIONS

## OPTION 1: NORMAL IMPORT PROCEDURE



## OPTION 2: SIMPLIFIED IMPORT PROCEDURE



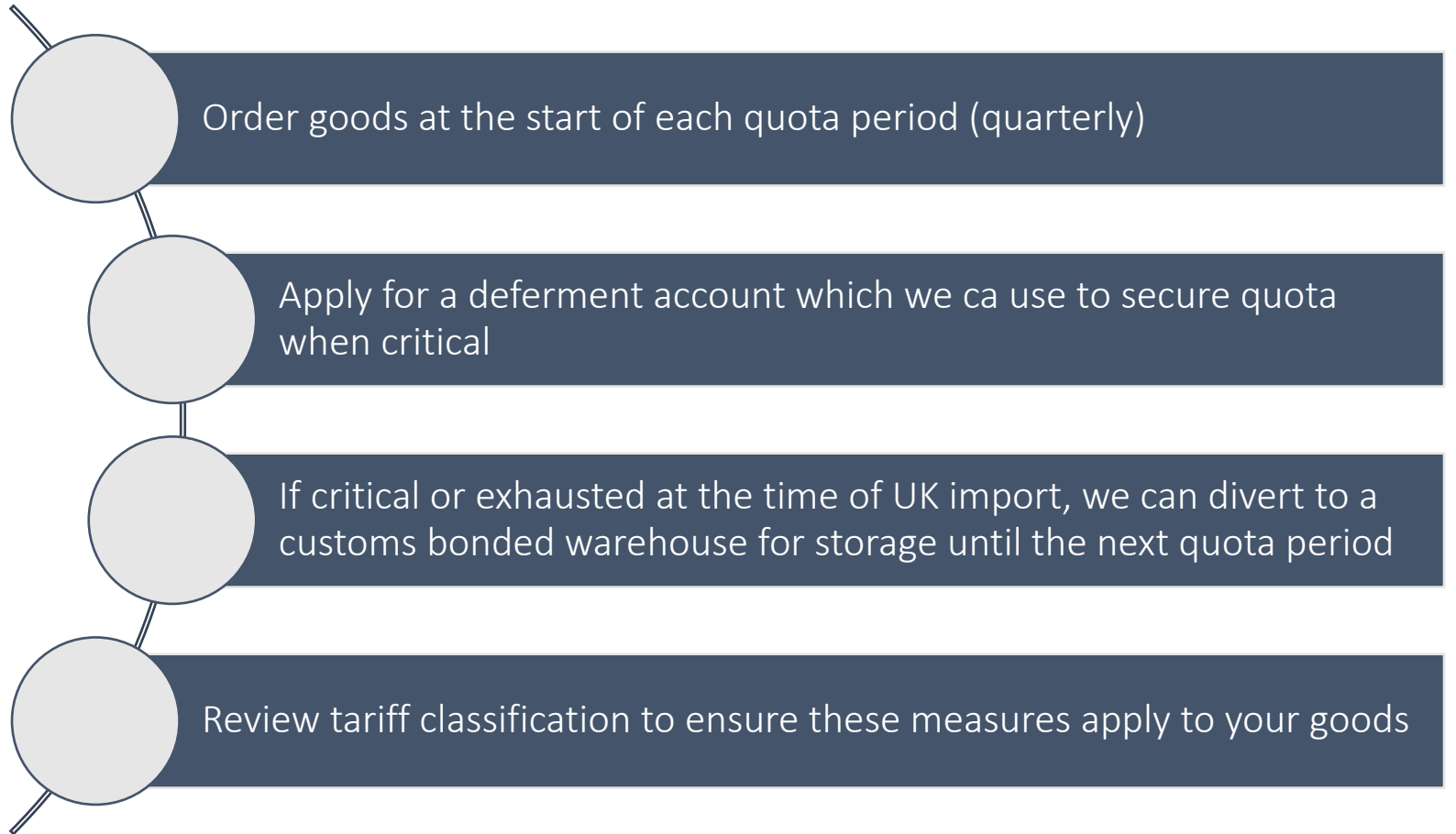
Recommended Solution

J A N U A R Y 2 0 2 2 O N W A R D S

# IMPORTS SUBJECT TO QUOTA

Imports subject to quota have been handled with a degree of flexibility this year as we had 175 days to complete the declaration, and could therefore wait until a new quota period if need be.

From 1<sup>st</sup> January 2022 this will no longer be the case. We recommend the following action is taken by importers impacted by quota.



J A N U A R Y 2 0 2 2 O N W A R D S

# IPAFFS

Applicable to animal origin & high risk food and feed products

1st Jan 2022

- IPAFFS pre-notification for EU origin goods at least 4 hours before arrival based on goods details e.g. origin, tariff code & purpose of movement

1st July 2022

- IPAFFS CHED based on export health certificate. Physical inspections introduced on arrival at Border Control Points.



# GVMS / INVENTORY PORTS IMPORT

There are two models in use across the UK at ports, GVMS and Inventory Linking

## GVMS Process (IMA)



Import entry completed prior to arrival (full or frontier)



Goods Movement Reference (GMR) generated in GVMS



Import entry number linked to GMR, confirming goods can board ferry / train at origin

## Inventory Linked Process (IMD)



Claim UCN in Destin8 or CNS using trailer or booking ref



Add UCN to MUCR field on C88/SAD and transmit import entry (full or frontier)



Import entry processed when goods arrive at port

# IMPORT PORTS

## GVMS (pre-lodgement)

- Cairnryan (when import declarations are required)
- Cheriton Channel Tunnel Terminal, Folkestone
- Dover, Eastern Docks (excluding the Dover Cargo Terminal and Eastern Arm) only
- Fishguard
- Heysham, Berths 1, 2 and 3 only
- Holyhead
- Liverpool, North Brocklebank & East Langton Berth, Gladstone Berth and Twelve Quays Terminal Birkenhead only
- Loch Ryan (when import declarations are required)
- Newhaven Ferry Terminal
- Pembroke Dock Ferry Terminal
- Sheerness

## DESTIN8

- Aberdeen
- Bristol
- Chatham
- Coatbridge (Glasgow)
- Dagenham
- Felixstowe
- Grangemouth
- Greenock
- Harwich
- Hull
- Immingham
- Ipswich
- Killingholme
- Liverpool
- Purfleet
- Sheerness
- Teesport
- London Thamesport
- Tilbury (London Container Terminal and RRR, 40E, 40T and 31B berths)
- Tyne & Blythe

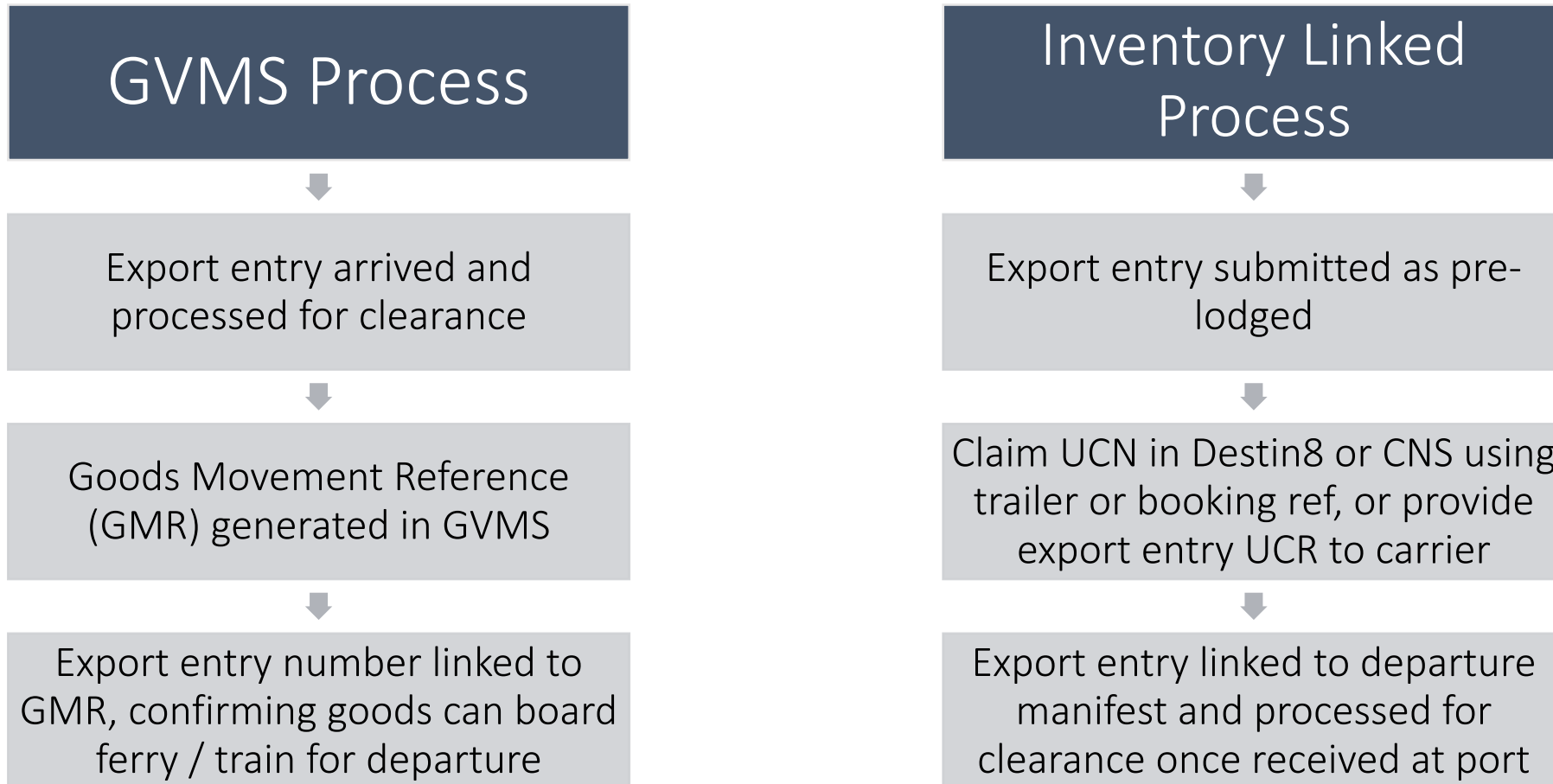
## CNS

- Southampton
- Tilbury
- Port of London
- Manchester
- Birmingham
- Immingham
- Belfast
- Portsmouth



# GVMS / INVENTORY PORTS EXPORT

There are two models in use across the UK at ports, GVMS and Inventory Linking



J A N U A R Y 2 0 2 2 O N W A R D S

# EXPORT PORTS

## GVMS (EXA)

- Cheriton Channel Tunnel Terminal, Folkestone
- Dover, Eastern Docks (excluding the Dover Cargo Terminal and Eastern Arm) only
- Fishguard
- Heysham, Berths 1, 2 and 3 only
- Holyhead
- Liverpool, North Brocklebank & East Langton Berth, Gladstone Berth and Twelve Quays Terminal Birkenhead only
- Pembroke Dock Ferry Terminal

## DESTIN8 (EXD)

- Aberdeen
- Bristol
- Chatham
- Coatbridge (Glasgow)
- Dagenham
- Felixstowe
- Grangemouth
- Greenock
- Harwich
- Hull
- Immingham
- Ipswich
- Killingholme
- Liverpool
- Purfleet
- Sheerness
- Teesport
- London Thamesport
- Tilbury (London Container Terminal and RRR, 40E, 40T and 31B berths)
- Tyne & Blythe

## CNS (EXD)

- Southampton
- Tilbury
- Port of London
- Manchester
- Birmingham
- Immingham
- Belfast
- Portsmouth